



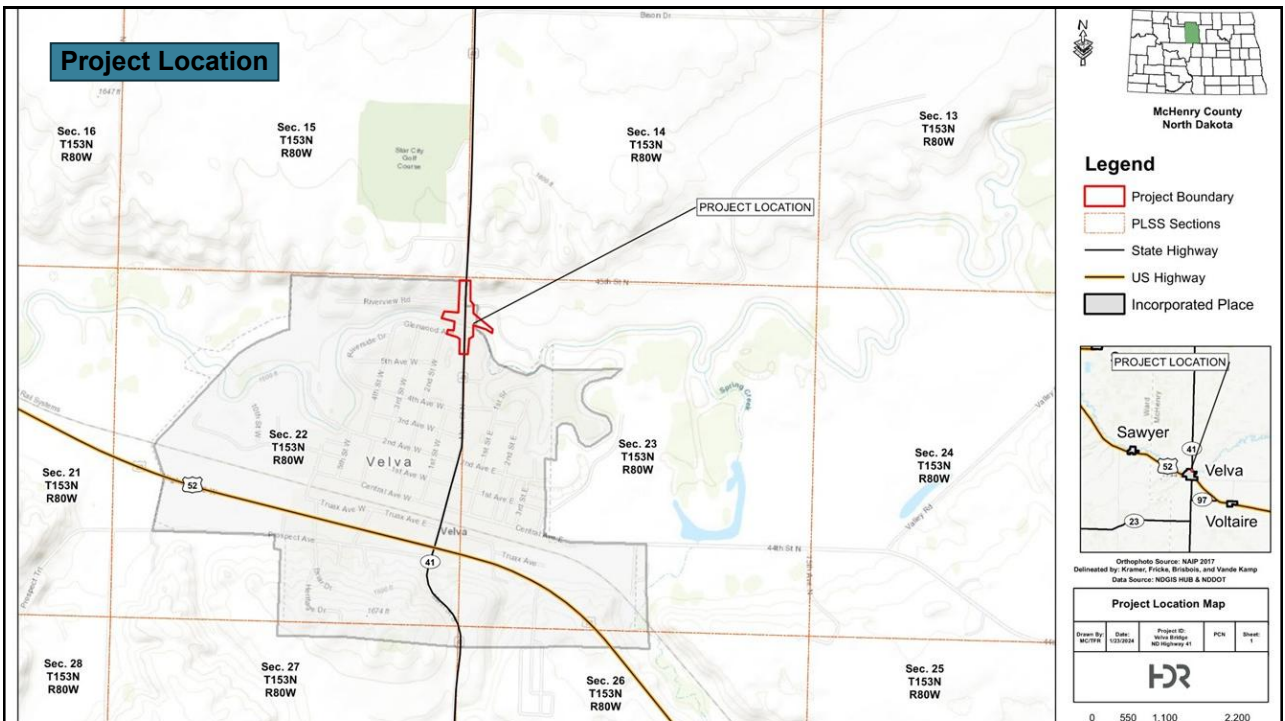
**Mouse River
 Enhanced Flood
 Protection Project –
 Phase VE-1**

*Velva - Highway 41 Bridge
 Replacement and Roadway
 Improvements*

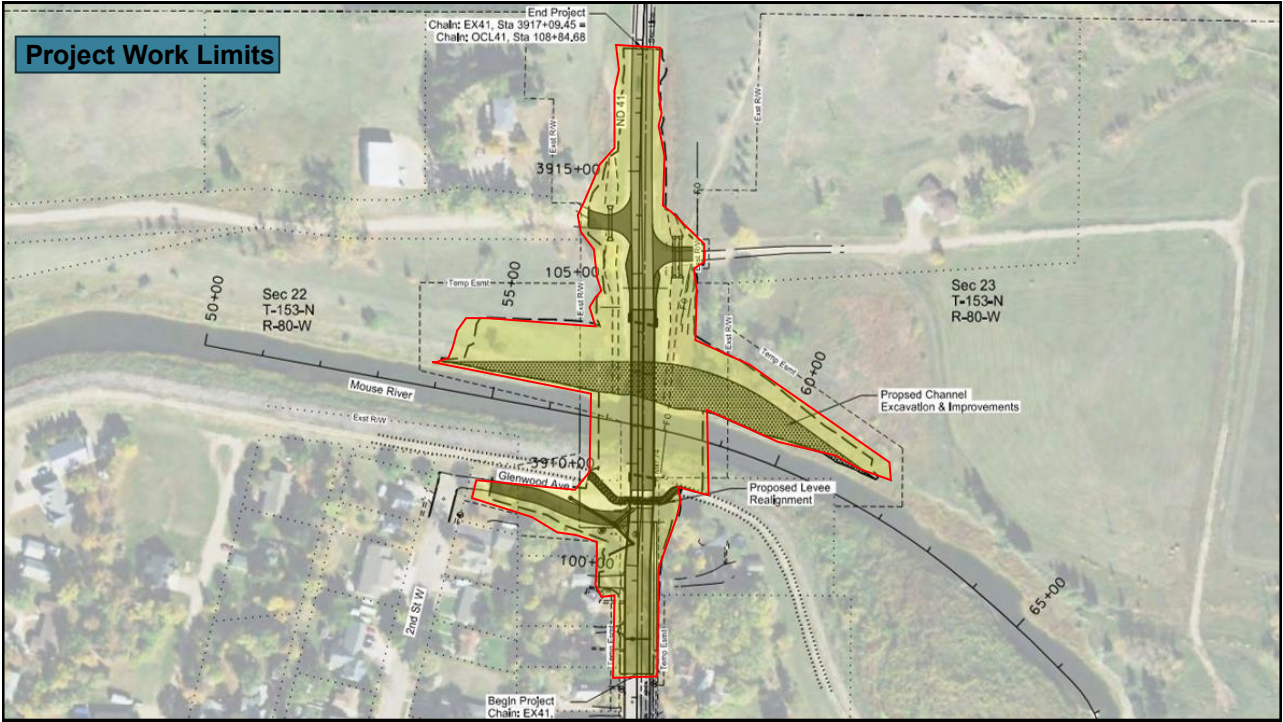
March 19, 2026

© HDR 2024, all rights reserved.

1



2



3

Purpose and Need

- Corridor does not meet current NDDOT bridge-width design standards
- Bridge lacks adequate hydraulic capacity
- 2011 Flood reached Elev. 1514.46
- New roadway Elev. 1515.62 at levee
- Storm drainage upgrades



Source: FEMA

4

Scope of Work

Roadway

- Reconstruct ND Hwy 41 from ~350 ft south of the bridge to ~500 ft north
- Realign ~250 ft of Glenwood Ave
- Rebuild affected Hwy 41 driveways
- Replace several drainage culverts north of the bridge
- Add minor storm sewer upgrades south of the bridge



5

Scope of Work (Cont.)

Levee

- Raise the south-side levee by ~2 ft to meet design grades
- Route utilities over the levee in concrete encasements
- Install new riprap protection on both riverbanks near the bridge



6

Scope of Work (Cont.)

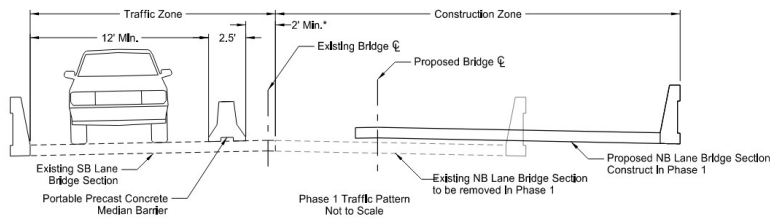
Bridge

- Remove the existing bridge in phases while maintaining one-lane traffic
- Build a new 262-ft, 3-span bridge using current design standards
- Provide a 38-ft roadway width and raise the south end ~2 ft
- Design life: 75 years



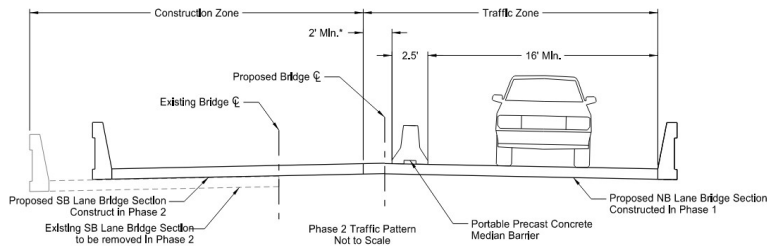
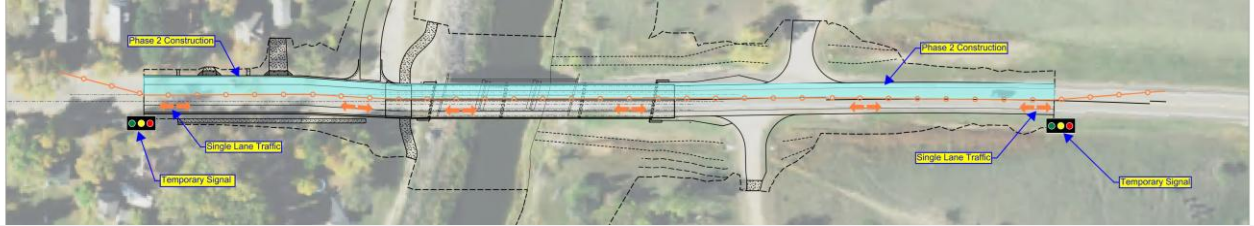
7

Construction Phasing & Traffic Control Phase 1



8

Construction Phasing & Traffic Control Phase 2

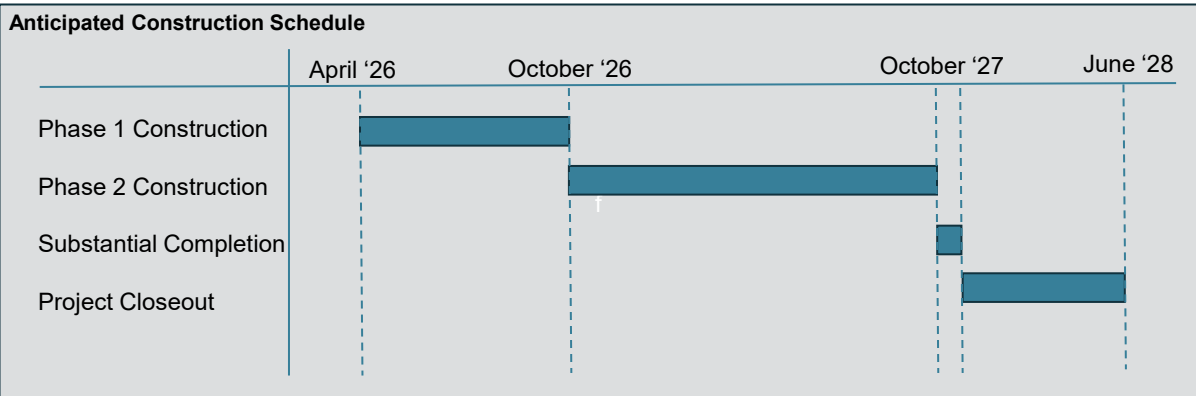


9

Schedule

Contractual Dates:

- Notice to Proceed issued **November 2025**
- Phase 1 Substantial completion **November 2026**
- Project Substantial completion **November 2027**
- Contractual project completion date **June 2028**.



*Project schedule is subject to change depending on weather or other unforeseen circumstances that arise.

10

Budget and Funding

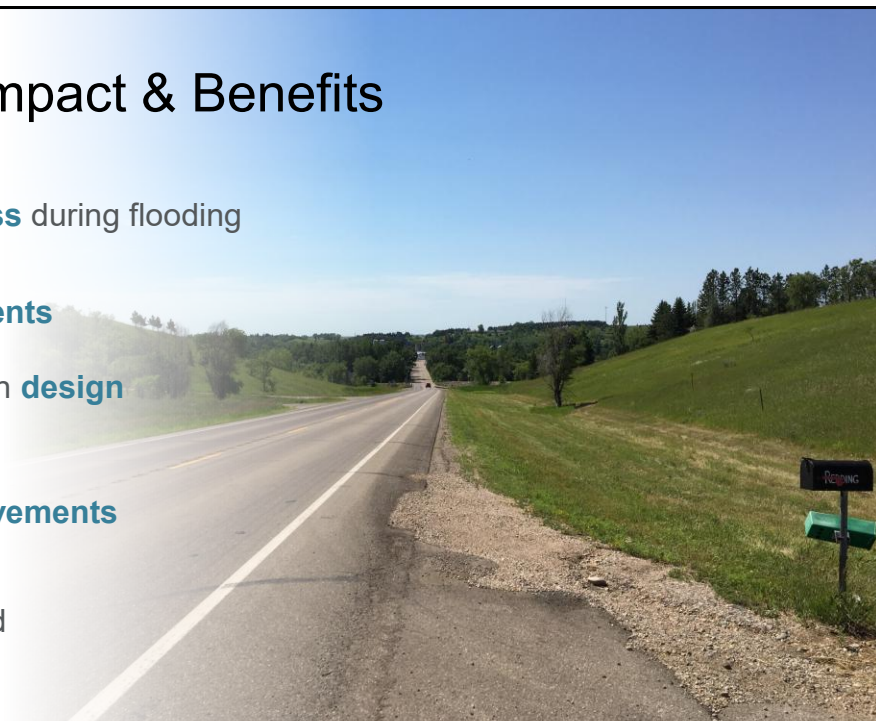
- Construction: \$10.14M
- Cost Share:
 - 65% Grant from NDSWC
 - 35% Local funding (various sources)



11

Community Impact & Benefits

- ✓ **Maintained access** during flooding
- ✓ **Utility improvements**
- ✓ Modern bridge with **design life of 75 years**
- ✓ **Pavement improvements**
- ✓ **No detour** needed



12



13

Contacts

General Contractor

Industrial Builders Inc
P.O. Box 406
Fargo ND, 58107-0406

Project Manager

Aaron Maley
701.840.1955
amaley@industrialbuilders.com

Project Superintendent

Steve Henze
701.799.3714
shenze@industrialbuilders.com

Engineer

HDR, Inc
3231 Greensboro Drive, Suite 200
Bismarck, ND 58503

Project Manager

Luke Rogers
605.782.8111
Luke.rogers@hdrinc.com

Project Superintendent

Jon Skjoldal
701.217.0097
Jonathan.Skjoldal@hdrinc.com

Souris River Joint Board

PO Box 1516
Minot, ND 58702

Chairman

David Ashley
701.626.1566
dashley@mouseriverplan.com

Project Administrator

Ryan Ackerman
701.837.8737
Ryan.Ackerman@ackerman-
estvold.com

14