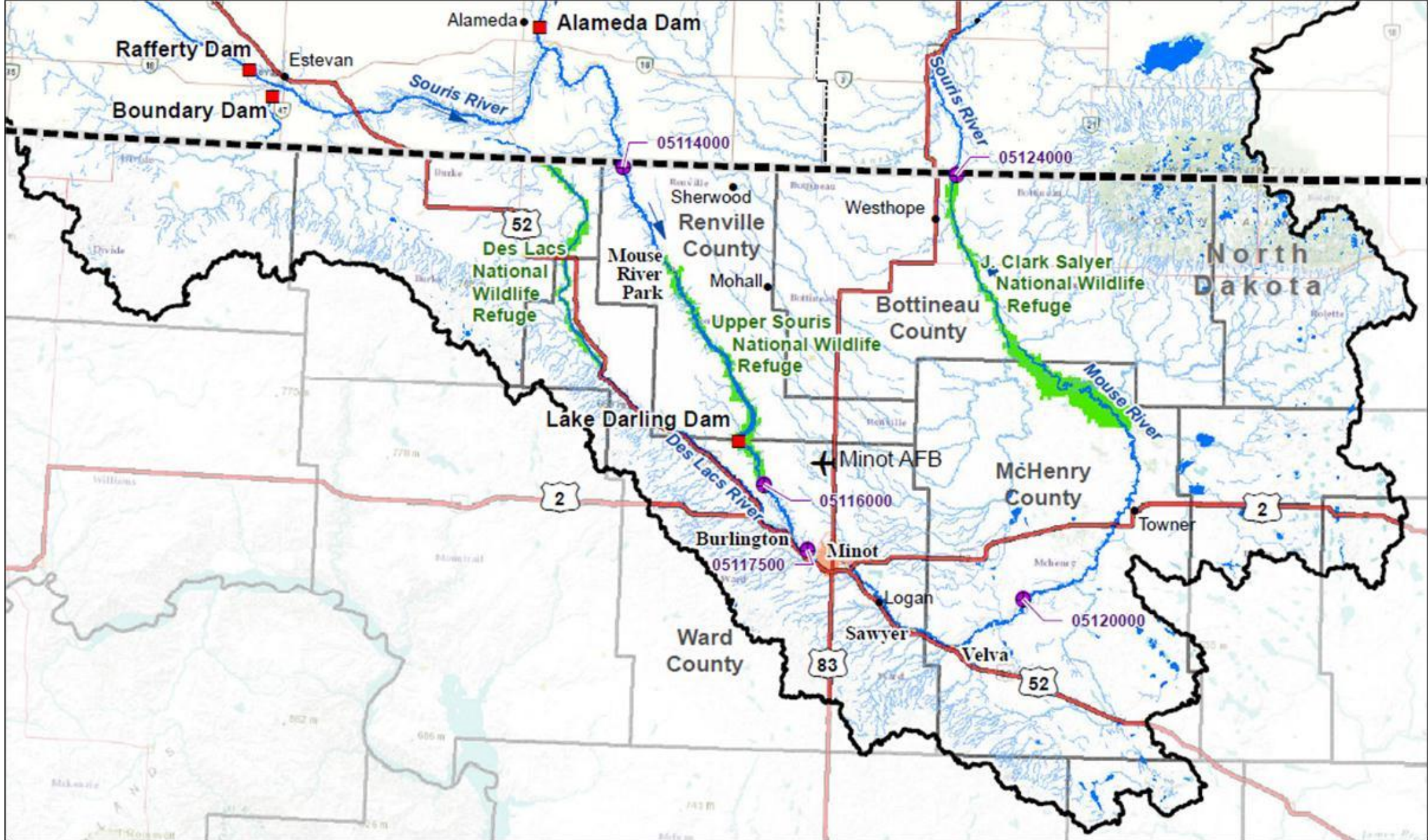




MOUSE RIVER PLAN

SRJB– PUBLIC INPUT MEETING
MINOT MUNICIPAL AUDITORIUM
PHASE MI-8/9: SOUTH BURDICK TIEBACK LEVEE
JUNE 5, 2025





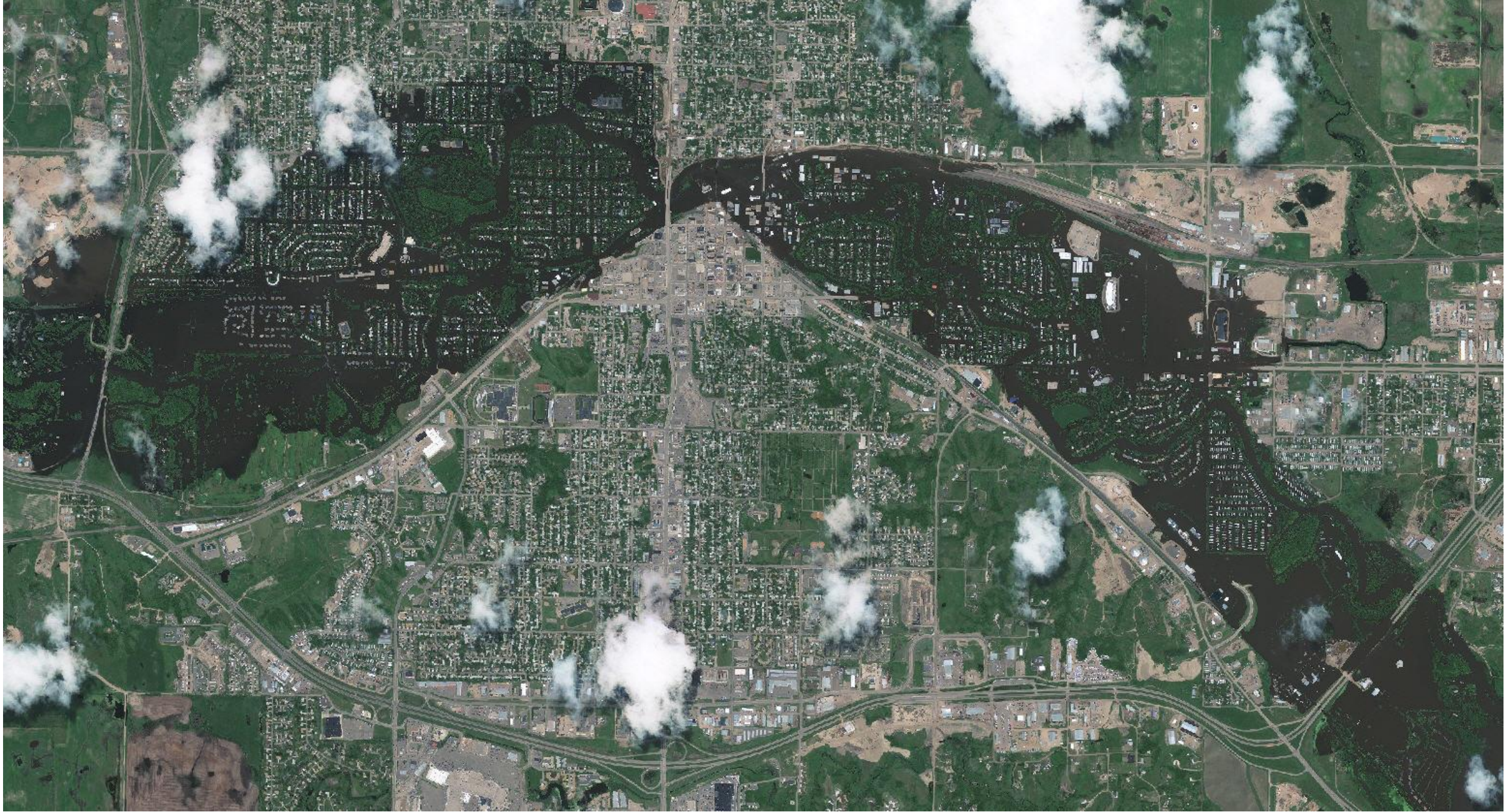
Overall Mouse River Enhanced Flood Protection Project Scope

Agenda – Informational Update MREPP Phase MI-6

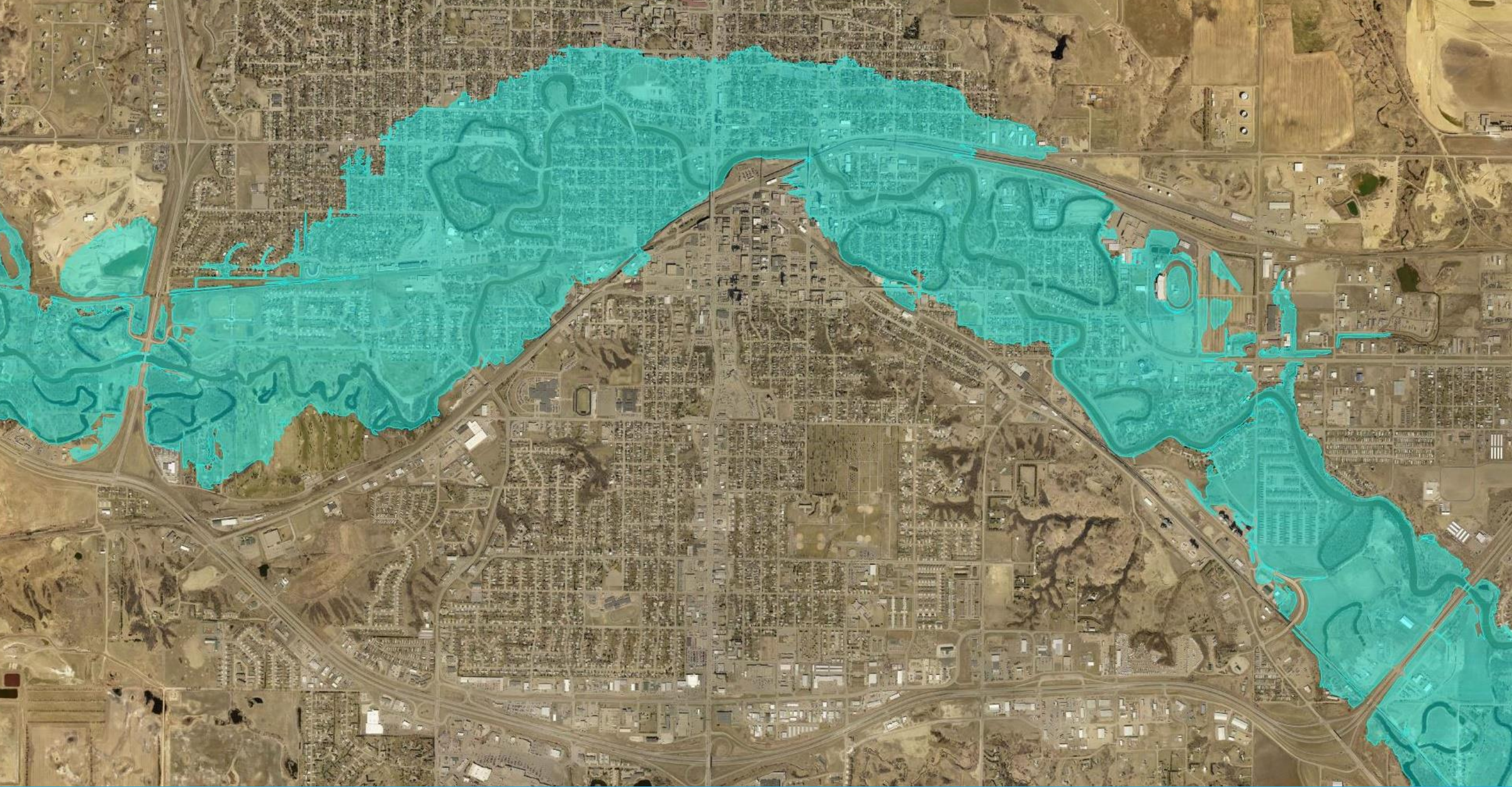
- MREFPP Project Overview
- Phase MI-8/9 Project Overview
- Preferred Alignment
- Cost and Financing
- Path Forward
- Comments/Questions Process - Tonight



2011 Flood/MREFPP



2011 Flood



Future FEMA Regulatory Floodplain

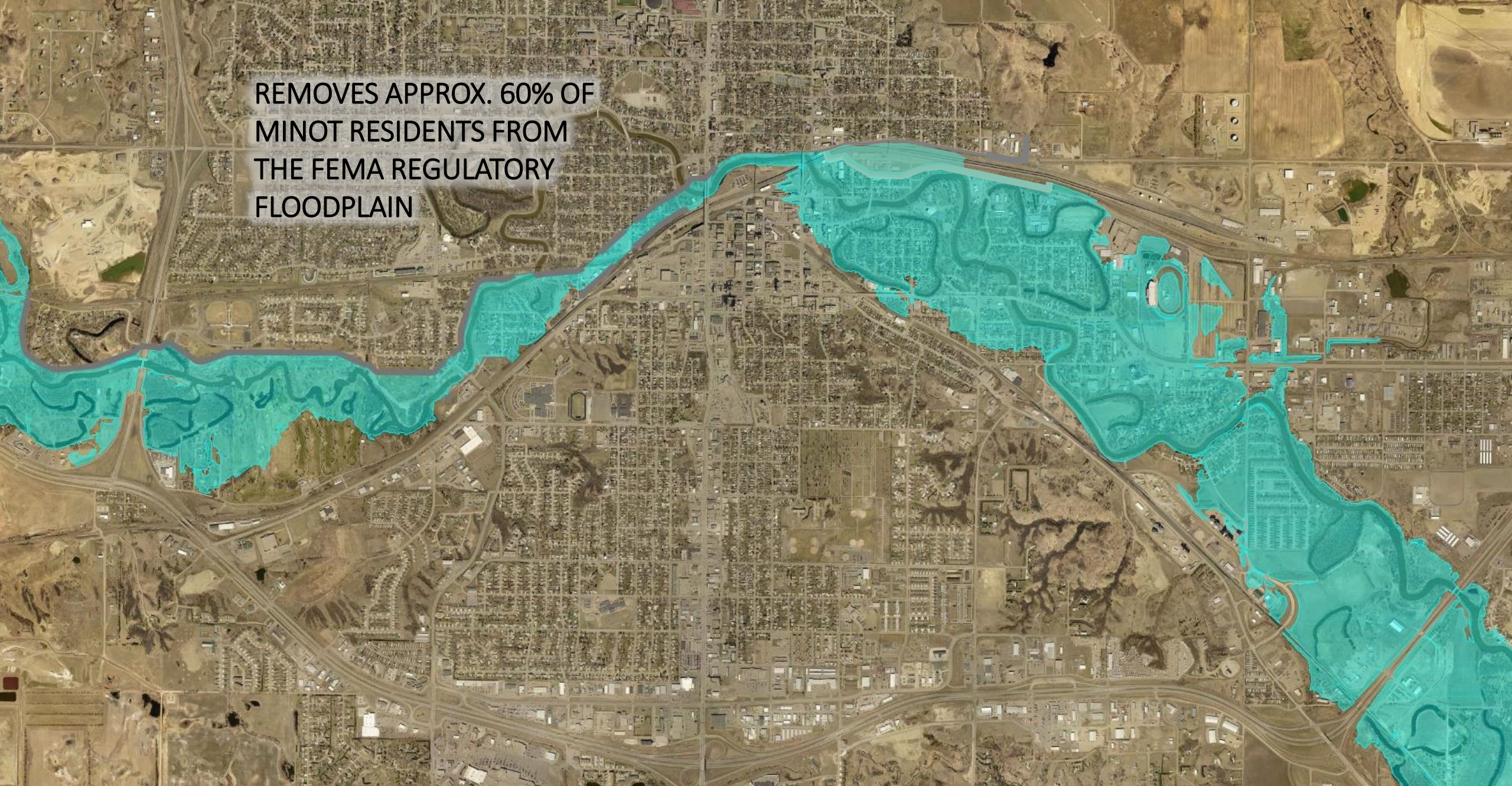


Milestone 1 Phases Complete or Under Construction

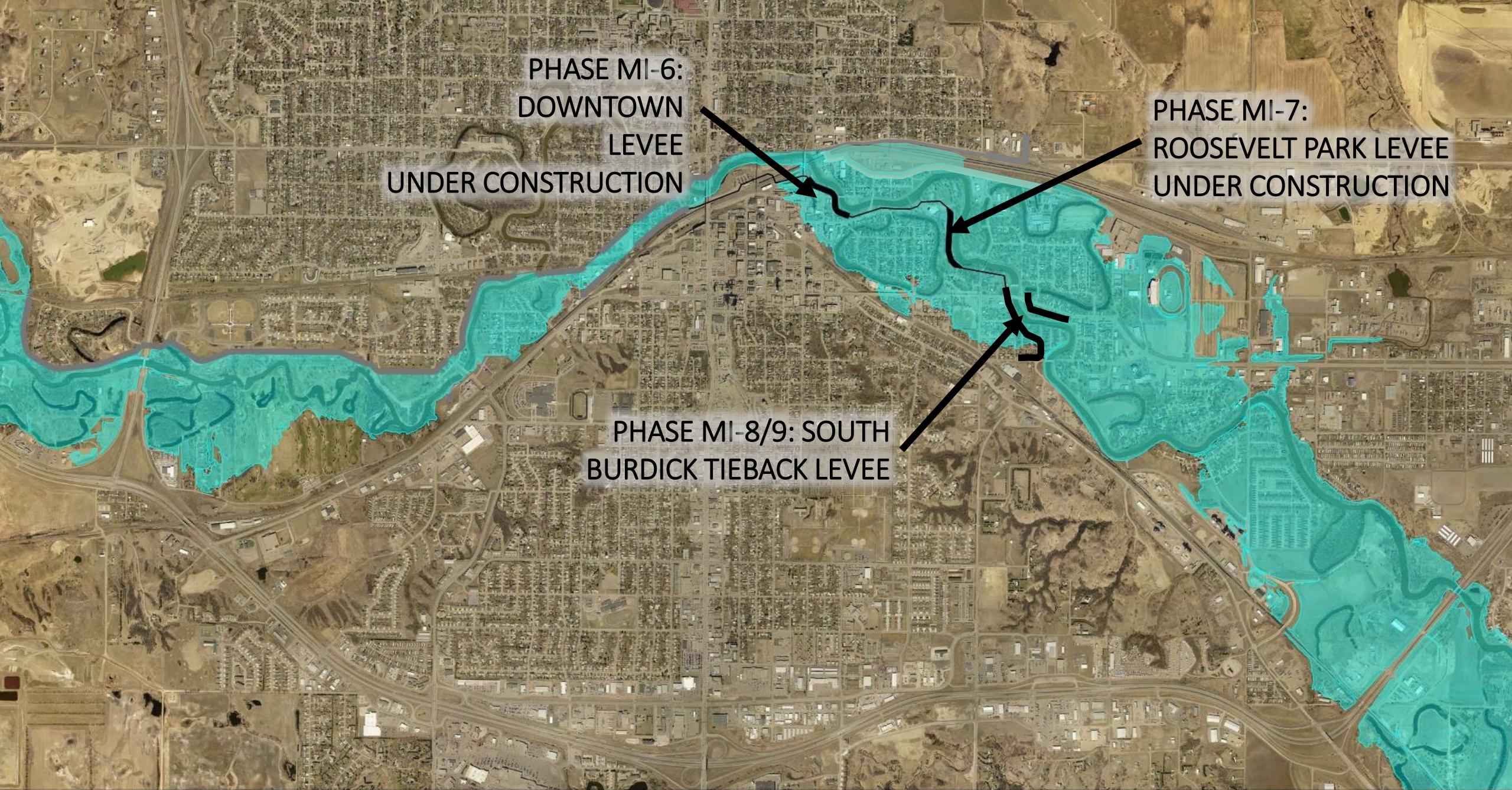


THE FEDERAL PLAN
MI - 4
MAPLE DIVERSION

REMOVES APPROX. 60% OF
MINOT RESIDENTS FROM
THE FEMA REGULATORY
FLOODPLAIN



Interim Regulatory Floodplain Following Milestone 1



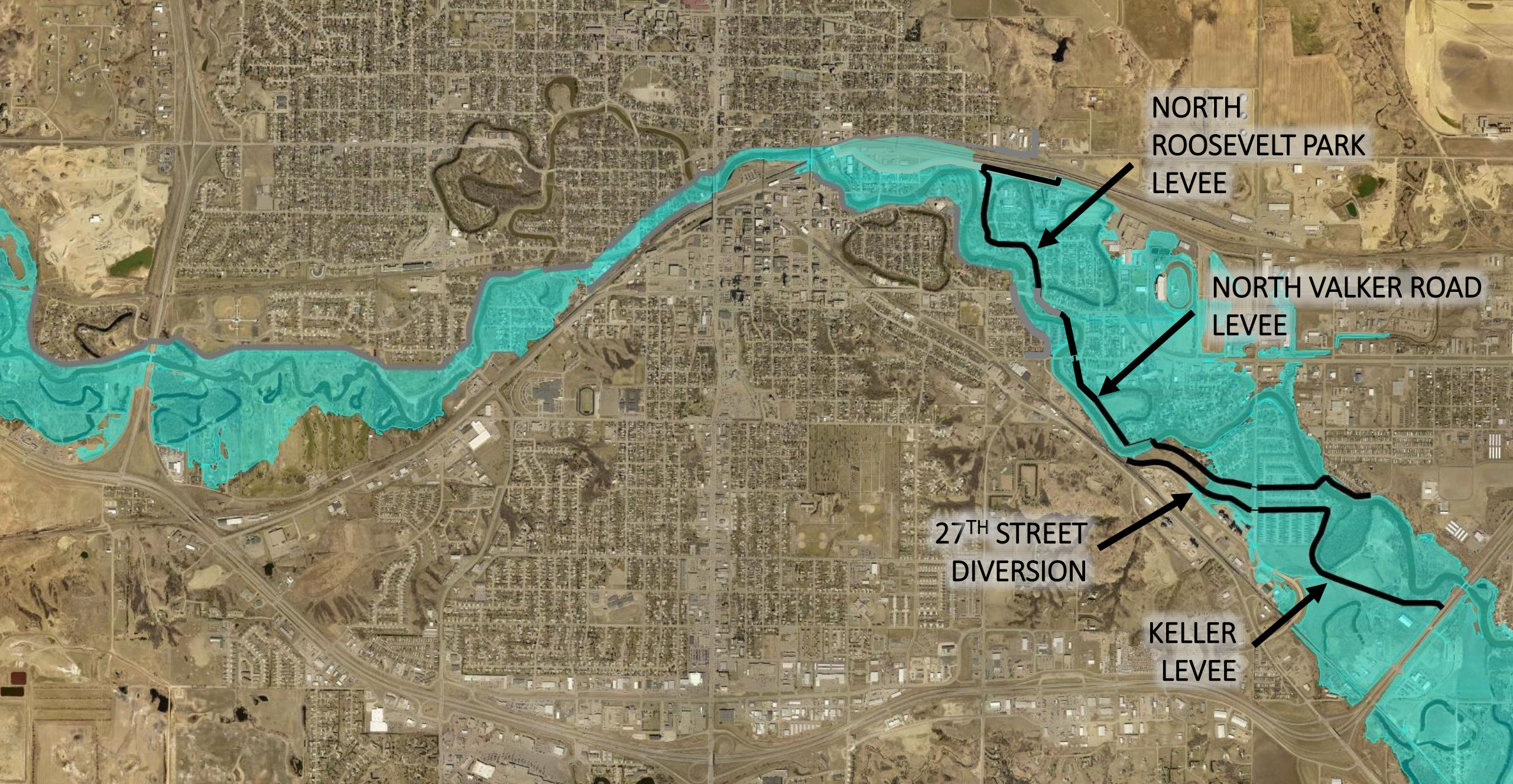
PHASE MI-6:
DOWNTOWN
LEVEE
UNDER CONSTRUCTION

PHASE MI-7:
ROOSEVELT PARK LEVEE
UNDER CONSTRUCTION

PHASE MI-8/9: SOUTH
BURDICK TIEBACK LEVEE

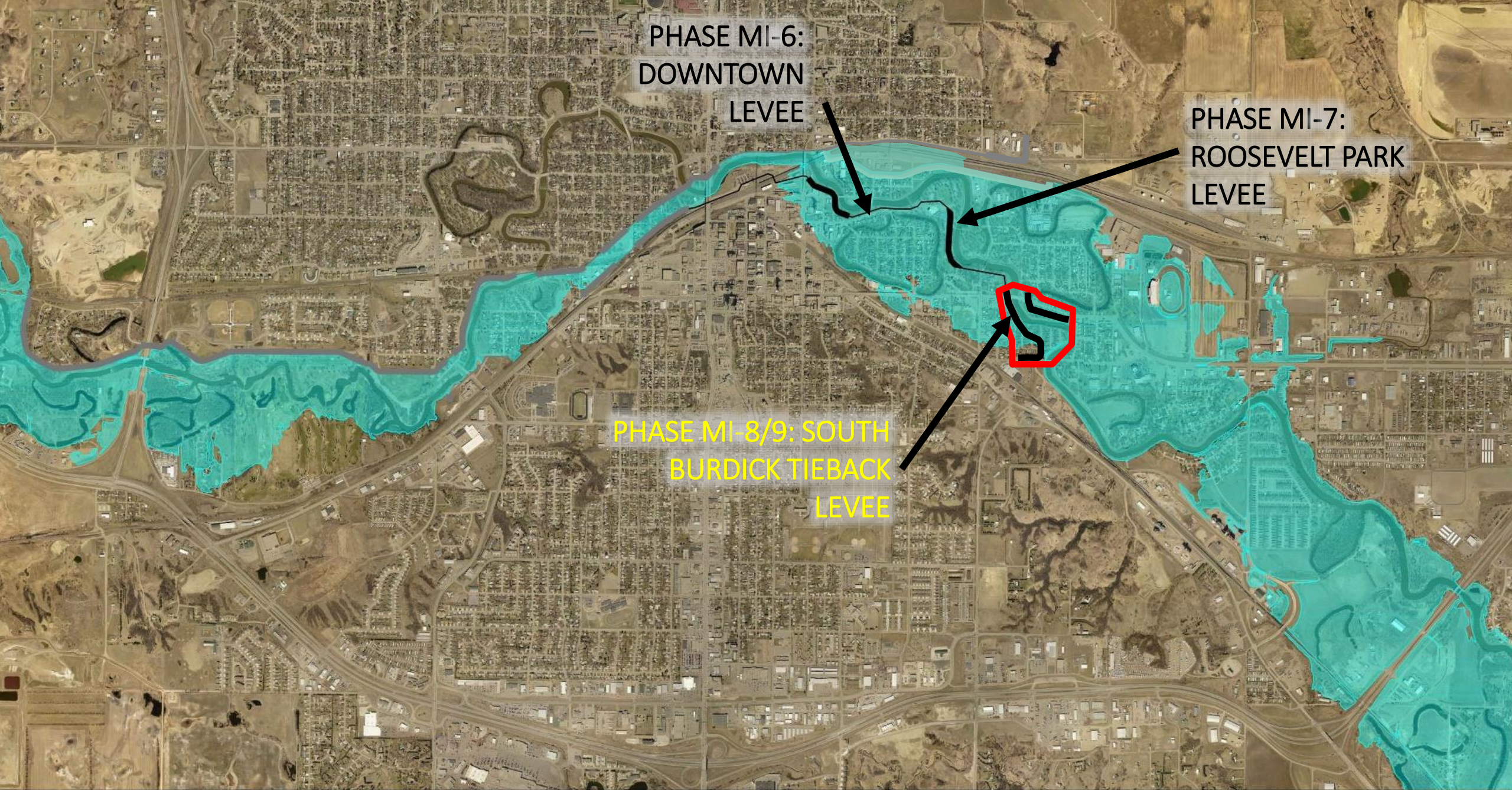


REMOVES AN ADDITIONAL
APPROX. 15% OF MINOT
RESIDENTS FROM THE
FEMA REGULATORY
FLOODPLAIN

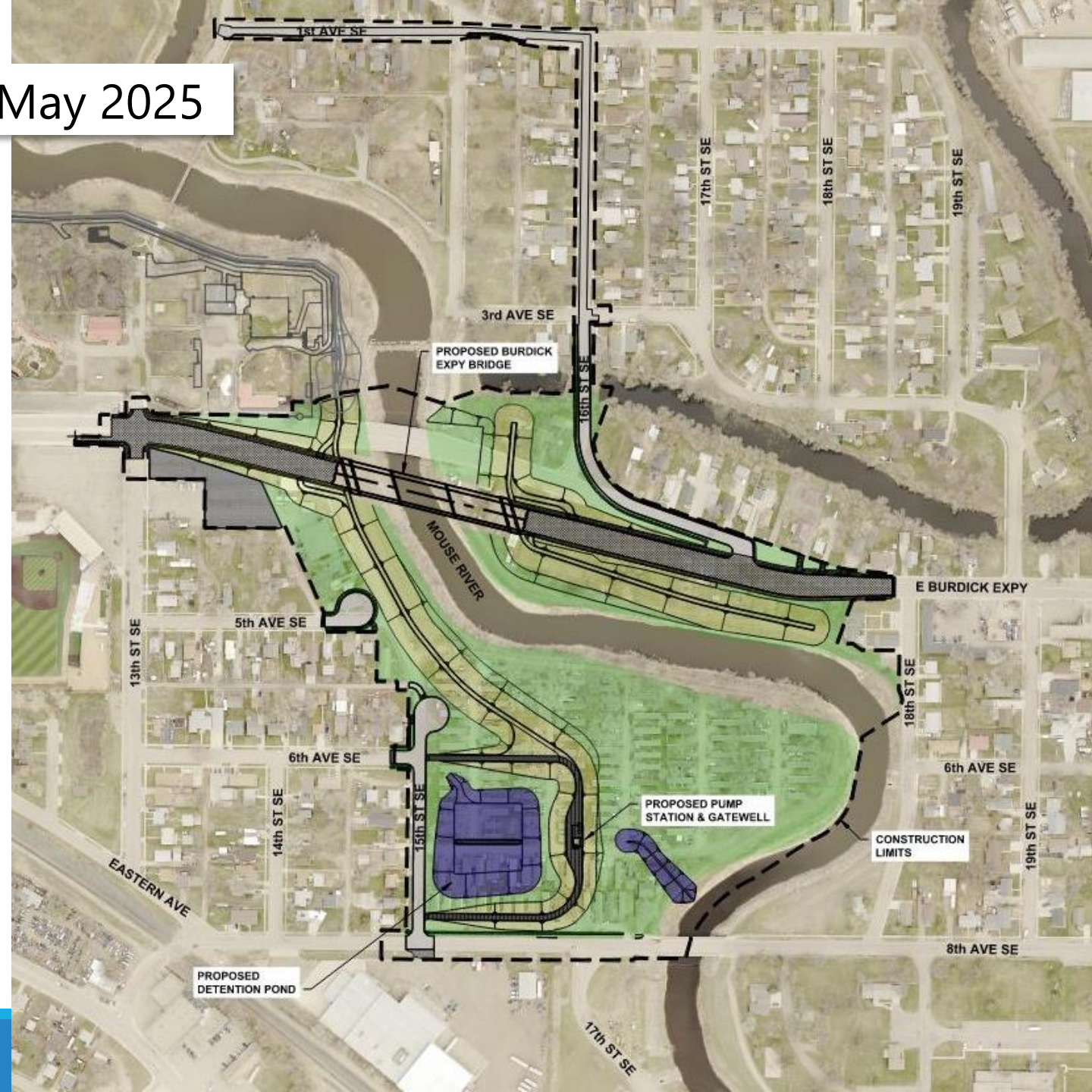




REMOVES REMAINING
APPROX. 25% OF MINOT
RESIDENTS FROM THE
FEMA REGULATORY
FLOODPLAIN

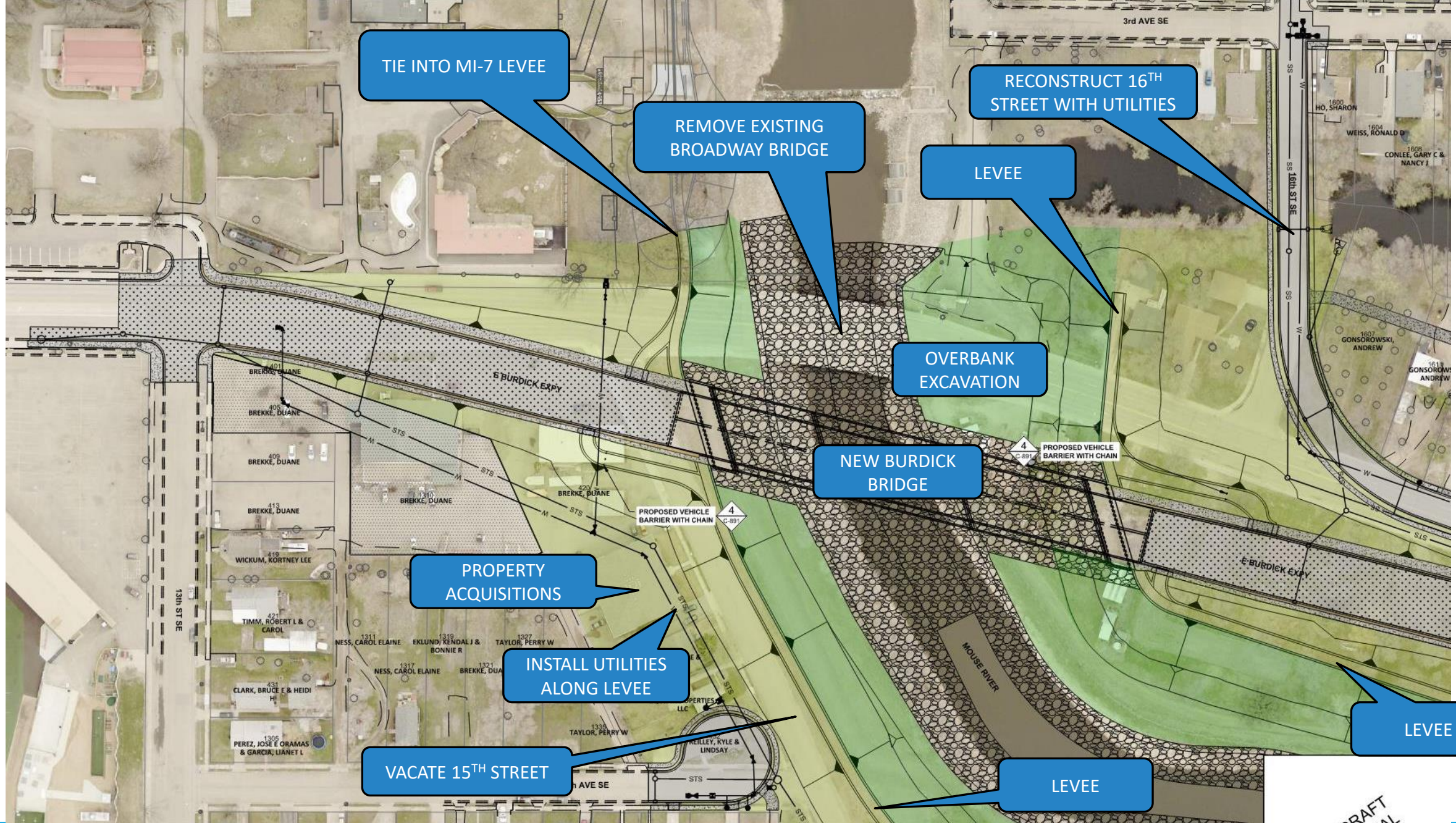


- 60% Design Completed May 2025



Project Overview





Phase MI-8/9: South Burdick Tieback Levee

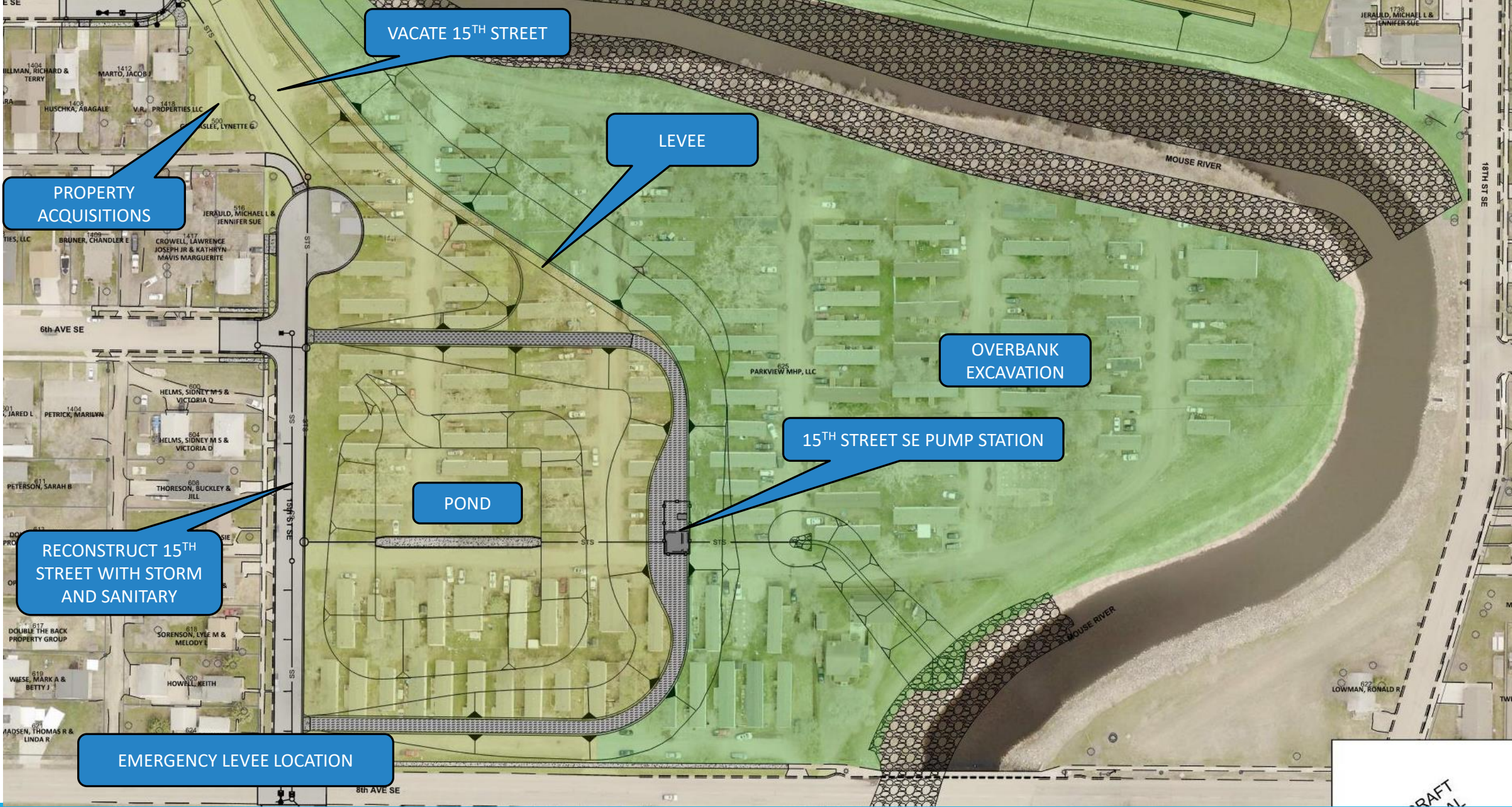
RECONSTRUCT 16TH
STREET WITH UTILITIES

LEVEE

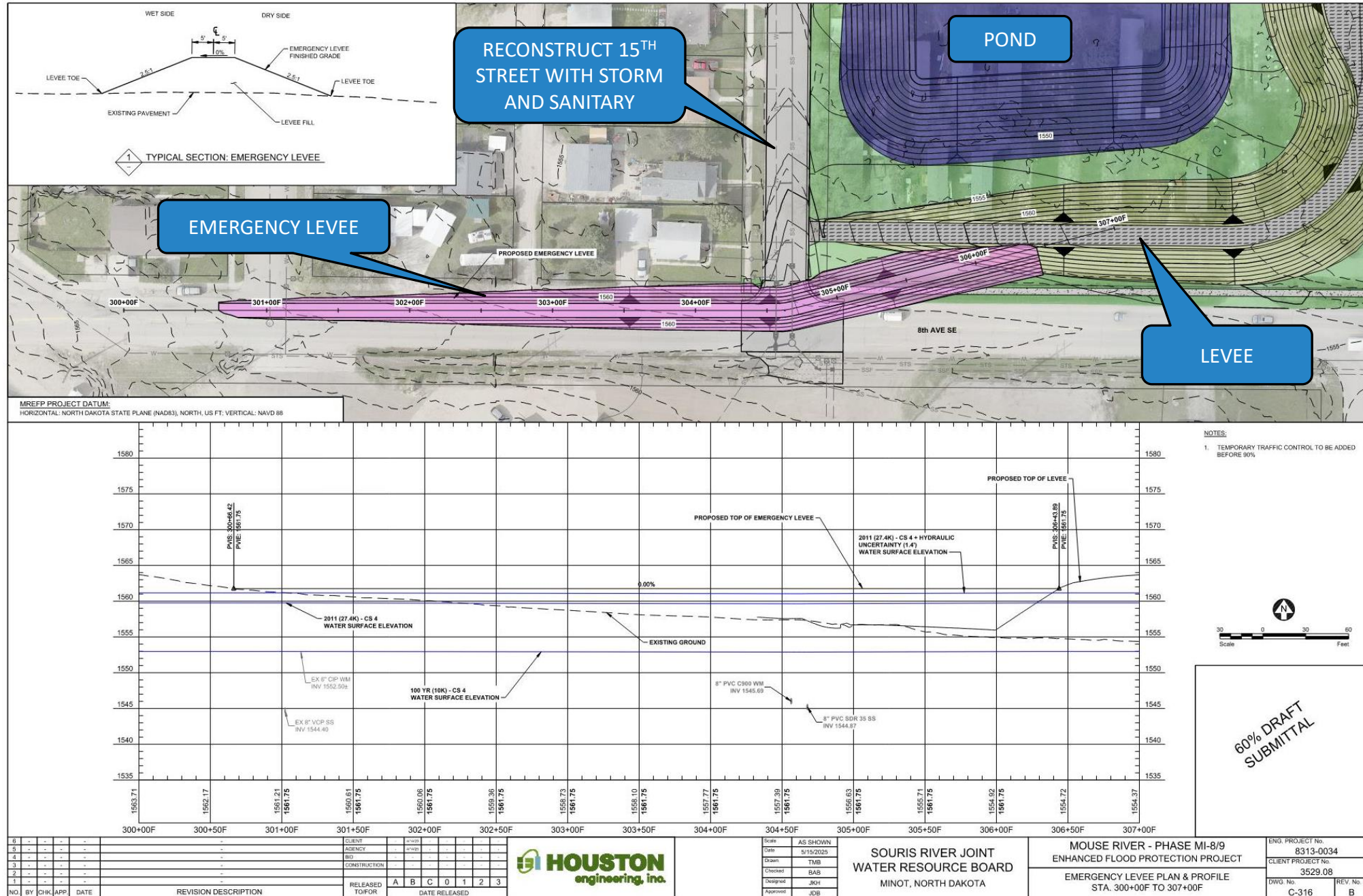
RECONSTRUCT BURDICK
EXPY

Phase MI-8/9: South Burdick Tieback Levee





Phase MI-8/9: South Burdick Tieback Levee



Phase MI-8/9: South Burdick Tieback Levee

- Current estimated construction cost – \$52.8 M
- Cost Share/Financing
 - 65% State of North Dakota
 - 35% Sales Tax



- Gather Public Input
 - Provide Written Comments through Comment Cards
 - Contact Odney – Kelly Nissen following meeting with additional questions/comments
 - (701) 833-2019
 - knissen@Odney.com
- Agency Input (USACE and NDDOT)
- City of Minot Alignment Concurrence July 7th
- SRJB Alignment Concurrence July 10th
- Project Schedule
 - 90 / 100% Design – Fall 2025 and Winter 2025/2026
 - Project Construction – TBD (likely 2026 or later)

THANK YOU

Phase MI-8/9: South Burdick
Tieback Levee

Public Information Meeting

June 5, 2025



MOUSE RIVER PLAN

Questions?

