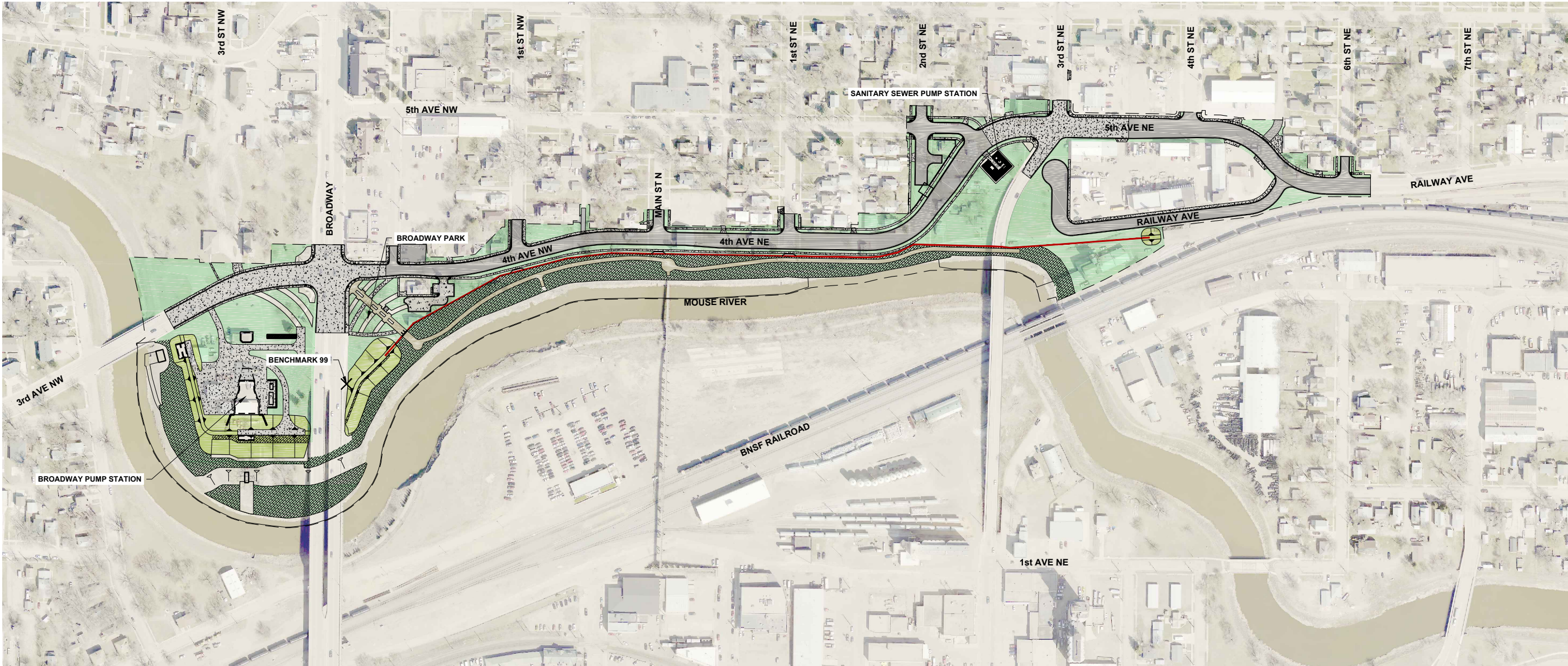


| TABLE G-106A               |                  |                 |           |                                 |
|----------------------------|------------------|-----------------|-----------|---------------------------------|
| PRIMARY PROJECT BENCHMARKS |                  |                 |           |                                 |
| BENCHMARK NAME             | NORTHING (NAD83) | EASTING (NAD83) | ELEVATION | BENCHMARK DESCRIPTION           |
| 100                        | 458584.162       | 1777221.601     | 1714.379  | NGS Station "Transport"         |
| 10000                      | 448161.879       | 1786630.181     | 1603.497  | Minot Public Works Base Station |

| TABLE G-106B             |                  |                 |                   |   |
|--------------------------|------------------|-----------------|-------------------|---|
| LOCAL PROJECT BENCHMARKS |                  |                 |                   |   |
| NAME                     | NORTHING (NAD83) | EASTING (NAD83) | TOP NUT ELEVATION | LOCATION DESCRIPTION  |
| Hydrant #1               | 453581.231       | 1774551.215     | 1555.760          | East side of Broadway Halfway between 4th and 5th Avenues       |
| Hydrant #2               | 453692.475       | 1775453.812     | 1555.250          | Southeast Quadrant on Intersection of 5th Avenue and Main St    |
| Hydrant #3               | 454055.961       | 1776719.674     | 1554.9            | North Side of 6th Avenue between 3rd and 4th St                 |
| Hydrant #4               | 453603.793       | 1777708.028     | 1555.2            | Northeast Quadrant on Intersection of 7th St and Railway Avenue |

1  
TABLE: BENCHMARKS



1  
PLAN: GENERAL PLAN

150 0 150 300  
Scale Feet

|   |     |     |      |          |                         |
|---|-----|-----|------|----------|-------------------------|
| MREFP PROJECT DATUM:<br>HORIZONTAL: NORTH DAKOTA STATE PLANE (NAD83), NORTH, US FT<br>VERTICAL: NAVD 88 |     |     |      |          |                         |
|   |     |     |      |          |                         |
|   |     |     |      |          |                         |
|   |     |     |      |          |                         |
| 1   | KNS | KAL | JDB  | 11/29/17 | ISSUED FOR CONSTRUCTION |
| NO.   | BY  | CHK | APP. | DATE     | REVISION DESCRIPTION    |

THIS DOCUMENT WAS  
ORIGINALLY ISSUED AND  
SEALED BY JERRY D. BENTS,  
REGISTRATION NUMBER  
PE-4874 ON 07-10-17 AND THE  
ORIGINAL DOCUMENT IS  
STORED AT HOUSTON  
ENGINEERING INC., 1401 21ST  
AVE. N, FARGO, ND 58102

|                 |               |          |          |   |   |   |   |
|-----------------|---------------|----------|----------|---|---|---|---|
| CLIENT          | 10/22/15      | 07/25/16 | 10/24/16 |   |   |   |   |
| AGENCY          | 10/22/15      | 07/25/16 | 10/24/16 |   |   |   |   |
| BID             |               |          | 07/10/17 |   |   |   |   |
| CONSTRUCTION    |               |          | 11/29/17 |   |   |   |   |
| RELEASED TO/FOR | A             | B        | C        | 0 | 1 | 2 | 3 |
|                 | DATE RELEASED |          |          |   |   |   |   |



|          |          |
|----------|----------|
| Scale    | AS SHOWN |
| Date     | 07-10-17 |
| Drawn    | KNS      |
| Checked  | KAL      |
| Designed | JMW      |
| Approved | JDB      |

SOURIS RIVER JOINT  
WATER RESOURCE BOARD  
MINOT, NORTH DAKOTA

MOUSE RIVER - PHASE MI-1  
ENHANCED FLOOD PROTECTION PROJECT  
GENERAL PLAN

|                    |          |
|--------------------|----------|
| ENG. PROJECT No.   | 8313-010 |
| CLIENT PROJECT No. | 3529.1   |
| DWG. No.           | G-106    |
| REV. No.           | C-0      |

ISSUED FOR  
CONSTRUCTION