



MOUSE  
RIVER  
PLAN

[WWW.MOUSERIVERPLAN.COM](http://WWW.MOUSERIVERPLAN.COM)

Mouse River Plan PROGRESS was developed by the Souris River Joint Board and its' partners to keep project stakeholders, constituents, and the region updated on the progress of the Mouse River Enhanced Flood Protection Project (MREFPP). The MREFPP is a basin-wide endeavor focusing on flood risk reduction along the Mouse River. The estimated \$1.5 billion project was initiated following the devastating 2011 flood and is anticipated to be completed in 25 years.

# PROGRESS



WINTER 2026

THIS PUBLICATION IS A PERIODIC UPDATE PROVIDED BY THE SOURIS RIVER JOINT BOARD





# URBAN ACTIVE PROJECT PHASES

## PHASE MI-5 NORTHEAST TIEBACK LEVEE

2025 was a busy construction season for crews working on Phase MI-5 Northeast Tieback Levee, bringing nearly all of this phase of the flood protection project to substantial completion. The pump station was successfully tested in the fall of 2025, and the City of Minot has accepted ownership of the facility and other project features.

The Phase MI-5 Northeast Tieback Levee project begins near 3rd Street NE at the east end of Phase MI-1 4th Avenue. It features concrete floodwalls extending approximately 2,500 feet eastward, transitioning to 1,400 feet of earthen levees tying into high ground east of 13th Street NE. A gap currently exists between the Phase MI-1 and MI-5A projects near the 3rd Street bridge. This gap will be addressed in a future phase, after the Phase MI-4 Project (Maple Diversion) receives approval from the North Dakota Department of Water Resources (NDDWR). Once completed, Phase MI-5 will connect with the previous phases of the MREFPP and is projected to remove around 60% of Minot residents from the proposed FEMA floodplain. This will provide long-term, certifiable flood protection against events similar to those experienced during the 2011 flood.



▲ MI-5 Pump Station

▼ MI-5 Tieback Levee Retention Pond



## PHASE MI-4 MAPLE DIVERSION

The 65% deliverable was provided to project stakeholders in the summer of 2025. Design comments have been received from project stakeholders (USACE, City of Minot, and multiple railroads), and the design teams are incorporating these into the 95% deliverable. The Minot City Council carried a roundabout concept on December 1, 2025. The option to change 2nd Avenue and 6th Street intersection from T-intersection to roundabout was preferred by City of Minot Engineering department, and the City Council voted to approve the change, with local dollars paying for the improvements. It is anticipated that the 95% deliverable will be provided to USACE and other project stakeholders in the summer of 2026.

The MI-4 (Maple Diversion Project) is a federally backed project connecting two previously completed Souris River Joint Board (SRJB) Projects: MI-3 Forest Road on the west and MI-1 4th Avenue on the east. The goal of this project is to provide certified flood protection for approximately 60%

of Minot residents within the FEMA regulatory floodplain. This project involves the construction of two river closure structures on the Souris River and flood protection features along a diversion channel. During flood events, gates at these structures will close, diverting water through the diversion channel around the Ramstad Loop. The section of the river channel between the structures (Ramstad Loop) will serve as internal drainage storage, managed by the Broadway Pump Station built in Phase MI-1 4th Avenue.

With federal involvement from the USACE, SRJB personnel are working with USACE representatives to streamline the design process. The goal is to reach 100% design completion in 2026 and proceed with construction contracting afterward. Federal funding for the project was secured in 2022 with support from Senator Hoeven, who allocated \$61.45 million for the construction of the Maple Diversion Project.



# URBAN ACTIVE PROJECT PHASES



▲ South east end of Phase MI-7 flood wall, right outside giraffe habitat.

## PHASE MI-7 ROOSEVELT PARK

The MI-7 Phase of the Mouse River Enhanced Flood Protection Project in the Roosevelt Park and Zoo area had a busy and productive construction season in 2025/2026. Construction activities were split between five construction contracts, two general contractors, and dozens of subcontractors.

Wagner Construction continued to rapidly construct Phase MI-7E which includes the concrete floodwall, earthen levee, municipal utility modifications, and bank stabilization. As of the end of 2025 this phase is approximately 85% complete.

The project was able to get an early spring start with favorable conditions. The large 27-inch sanitary sewer main was completed and was critical to the project schedule. Installation of the seepage cutoff wall began in April of 2025 and was completed in July. Upon completion of the seepage cutoff wall, construction of the concrete floodwall began in early June. Subcontractor Rice Lake West worked into December and was able to complete the entire 2,100 feet of concrete floodwall in 2025, well ahead of the initial project schedule.

Other notable project items completed in 2025 include the construction of 1,300 feet of earthen levee located in the northern portion of the park. Several sections of new water main, sanitary sewer, and storm sewer were installed in the park as well as the area designated for new zoo exhibits. New asphalt parking lots were constructed for the pool and pickleball courts. Rip rap installation along the riverbank was also completed.



▲ East river side of flood wall through Roosevelt Park



▲ Looking northwest through floodwall panels looking at the new location for North American zoo exhibits.



# URBAN ACTIVE PROJECT PHASES

Work planned for the 2026 construction season will involve restoration of the park including final lifts of asphalt, sidewalks, installation of two playgrounds, and seeding in the park. The Magic City Express miniature railroad will also be restored. Several sections of track will be reinstalled, and new vehicle crossings will be constructed. Staining of the floodwall will also begin in the spring. The contractor anticipates all work being completed by the end of the construction season in 2026. Roosevelt Park is expected to fully reopen in late summer or early fall.

Mattson Construction has been constructing several buildings in the park and zoo. The relocation of the Discovery Barn and new concessions stand were completed the fall of 2025 and will be fully operational for the summer of 2026. Work continues on the new restroom near the pickleball courts. The facility is scheduled to be open in conjunction with the park in the spring/summer. The Magic City Express Maintenance Building is wrapping up and will store the miniature train and cars when not in use.

Several additional contracts have been awarded for new facilities which will begin construction in 2026. MI-7G includes construction of a new wolf exhibit, a new North American cats exhibit, and a new storage building. MI-7J includes construction of a new restroom on the east side of the zoo near the African Plain Building. These phases are scheduled to begin construction in the spring and will be completed in 2027. Along with the new construction contracts, a contractor was also selected to begin demolition of the former North American exhibit located on the north side of the river. DL Barkie plans to begin demolition in February 2026 and will be wrapped up by mid-summer.



▲ Winter ariel view of 80 panel flood wall in Roosevelt Park



Looking towards the southwest from the playground area of Roosevelt Park; showing the Magic City Express platform & building, new restrooms, and earthen levee walk path. ➡



# URBAN ACTIVE PROJECT PHASES



◀ Downtown & Roosevelt area  
Pump Station walls all framed in

## PHASE MI-6 DOWNTOWN MINOT

Phase MI-6 Downtown begins at Main Street North in the Minot downtown area and continues east along the railroad tracks and river, extending past 8th Street SE. This phase ultimately concludes at Roosevelt Park, which connect to Phase MI-7 Roosevelt Park and Zoo, also currently under construction. Features of this phase of the project include concrete floodwalls, earthen levees, roadway modifications, utility adjustments, a gatewell, and a stormwater pump station. Some of the concrete floodwalls will be similar in height, pattern, and color to the Phase MI-1 4th Avenue floodwalls, extending approximately 13 feet above the finished grade. The section along Central Avenue will maintain a similar height but will feature a different pattern and color to compliment the pump station and park features. Additionally, the earthen levees will be seeded and will transform into a natural green space upon completion. Construction in 2025 included completing the seepage barrier below levees and floodwall areas, construction of levees, installing bank erosion protection, relocation and installation of new utilities, paving Central Avenue E from west of 4th Street NE to west of 6th Street SE, and on 4th Street NE from Central Avenue E to just south of 1st Avenue NE.

Progress was also made on the floodwall, completing 563ft of footing and 280ft of wall. Outfalls were constructed to receive and discharge to the Mouse River and oxbow at Central Avenue E Gatewell and 8th Street NE Pump Station and Gatewell. Park Construction and their subcontractors have installed the base slab and foundation walls for the 8th Street NE Pump Station and Gatewell. Construction of Central Avenue E Gatewell is underway, with the base slab installed and foundation wall construction in progress. The project's Final Completion date is scheduled for June 2028.



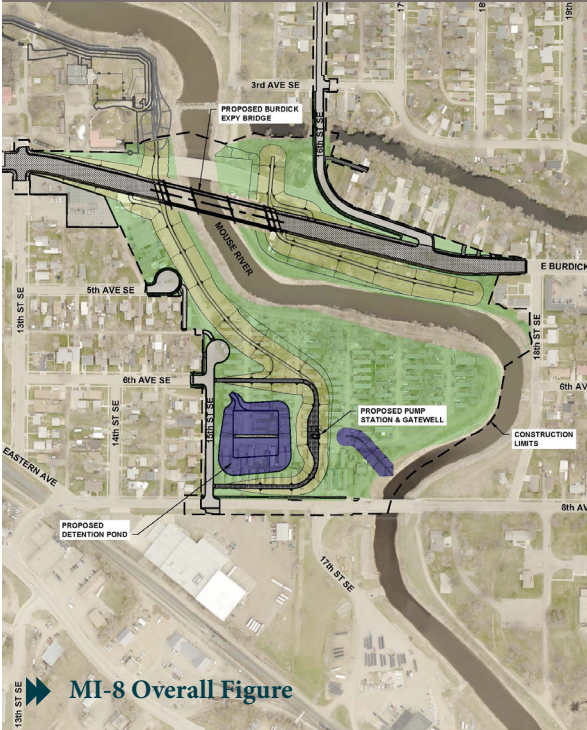
▲ Gatewell structure off 7th St SE



Panels for Flood Wall being set, located off of Central Avenue ►►



# URBAN ACTIVE PROJECT PHASES



## PHASE MI-8/9

### BURDICK SOUTH TIEBACK LEVEE

The Flood Protection Alignment for Phase MI-8/9 begins just north of East Burdick Expressway and follows the Mouse River until it reaches just north of 8th Avenue SE. At this point, it turns west and ends at 15th Street SE to accommodate the flood protection features, East Burdick Expressway will be realigned between 14th Street SE and 18th Street SE. This realignment will include the construction of a new Burdick Expressway Bridge over the Mouse River.

Additionally, a retention pond and pump station will be integrated into the flood protection line north of 8th Avenue SE, complete with an open channel outfall to the river. The project will also involve relocating storm sewers along 15th Street SE and the East Burdick Expressway, as well as relocating water mains along these streets. Furthermore, sanitary sewers will be relocated along 1st Avenue SE and 15th Street SE. This phase marks the final stage of Milestone 2 of the Mouse River Enhanced Flood Protection Project (MREFPP). This phase is expected to be ready for bidding in 2026, but likely won't start construction until 2027 or 2028.

## RURAL REPORT

### MOUSE RIVER PARK, ND

Bids for the Mouse River Park project were opened on July 22, 2025 by AECM, with Industrial Builders identified as the apparent low bidder under a single prime contract. The Board subsequently approved this bid in August, and a preconstruction meeting occurred September 2, 2025.

Construction activities commenced in the fall of 2025. Crews are installing piles for pier supports, which will serve as the foundation for the structure. Concrete pours for the piers have begun and will continue into spring 2026. At present, the project remains on schedule, reflecting steady progress toward completion.



### VELVA, ND

The Souris River Joint Board approved the low bid for the Velva project on June 5, 2025. Following approval agreement, documents were executed by both the Board and the contractor, ensuring all contractual obligations were in place. The final state permits were secured before issuing the Notice to Proceed in November 2025.

The contractor is expected to submit a detailed construction schedule in the upcoming months. With these preparations complete, construction is anticipated to begin in the spring of 2026, marking a significant milestone in advancing this important infrastructure project.